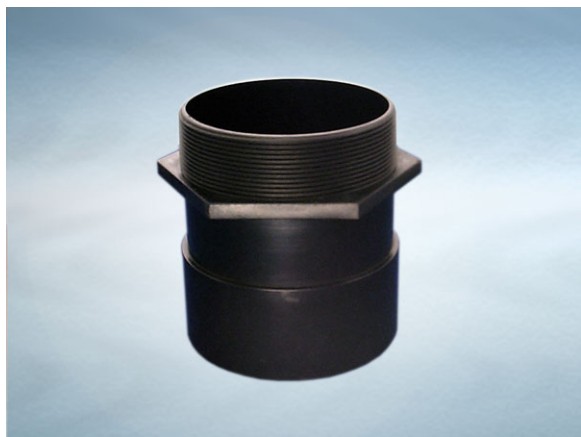


## Product Details

### T1704 Adaptor

### Technical Data

**Dimensions:**

116 dia. overall size

126 - Length

**Connection** - 110mm Plastic, 4" CI BS416 / BS437 / 100mm  
DIN19522 / Harmer SML

**Materials** - ABS

**Weight** - 0.2 kg

**General Description:**

ABS T series Threaded Pipework Adaptor, with 4" BSP inlet and 110.2, 111, 114, 117 dia. outlet. ABS spigot adaptor 4" BSP male to all 100mm plastic / cast iron.

**Materials:**

**ABS:** Used for bodies, dip tubes, extensions and spigot adaptors. A cost effective, fire resistant material.

All dimensions are in millimetres unless stated. In line with general practice all dimensions shown are nominal.

Wade International

Third Avenue, Halstead, Essex, CO9 2SX.

Telephone: +44 (0)1787 475151

Fax: +44 (0)1787 475579

e-mail: [wadetech@alumascwms.co.uk](mailto:wadetech@alumascwms.co.uk)

website: <https://www.alumascwms.co.uk/brands/wade/>

**Dimensioned Section for T1704:**

